

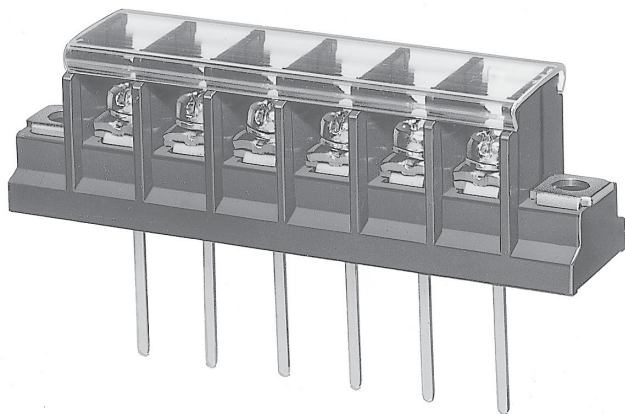


貫通型端子盤



TUV 認証品 Certified Through-type Terminal Block

Recognized



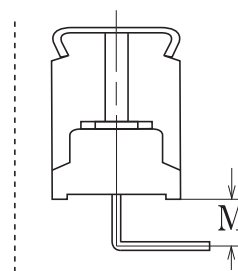
ピッチ/Pitch 10mm

| | |
|-------------------------------|--|
| 型名 Type Number | UF2325P-1 |
| 定格 Rating | AC250V AC150V 20A AC600V |
| 絶縁抵抗 Insulation Resistance | 500V 1000MΩ 以上 DC500V 1000MΩ and over |
| 耐電圧 Withstands Voltage | 2000V 1分間以上 AC2000V 1 minute and over |
| 適合電線 Compatible Wire | 12-22AWG |

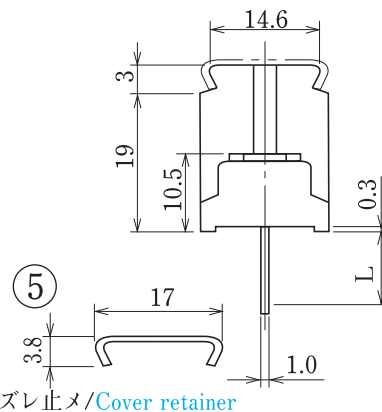
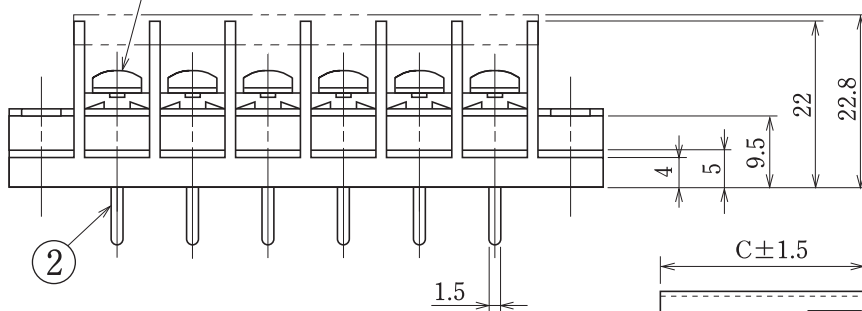
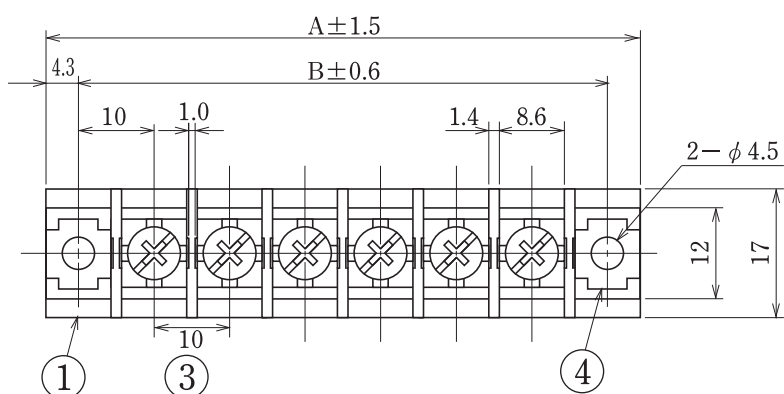
一般公差/General Tolerance ±0.5

尺度/Scale 1/1 単位/Unit mm

| 呼び/Nominal | L |
|------------|------|
| 4 L | 3.8 |
| 7 L | 6.8 |
| 15 L | 14.8 |
| 20 L | 19.8 |
| 30 L | 29.8 |
| 45 L | 44.8 |



リード曲げ加工例
Example of a lead bent



● 注文方法: 型名 — リード長 L — (曲げ希望時) 曲げ寸法 M — 極数 P.

● Ordering Form: Type No. Lead Length (L) Bent Length (M) No. of Poles (P) (if bending is desired)

● 結線ビス: 締付トルクは1.4N・mです。又、別仕様についてはINDEXを御参照ください。

● Connection screw: Tightening torque is 1.4 N・m. See INDEX for other specifications.

● カバーはオプションとなっておりますので御希望の際は注文方法の末尾に-CTと御記入ください。但しカバーは添付納入となります。

● A cover is optional. To obtain one, add "-CT" to the end of the order description shown above. A cover will be delivered attached.

● 用途: 250Vは市販(商業用)器具-事務用設備、電子式データ処理設備等。150Vは一般産業用(UL-C-UL)。600V(Tüv)。

● Application: The 250V type is commercial appliances, including business equipment, electronic data processing equipment, etc. The 150V type is general industrial (UL-C-UL). 600V (Tüv)

仕様/Specifications.

| 部番/Part No. | 名称/Part Name | 材質/Material | 規格/Standard | 寸法/Size | 処理/Treatment | 備考/Remark |
|-------------|---------------------|------------------------|-------------|-----------|-----------------------|----------------|
| 1 | 基板 Base | PBT | UL | | | 黒色 Black |
| 2 | 導電板 Terminal | 黄銅 Brass | C2680R | 板厚 t 1.0 | スズメッキ Tin-Plated | |
| 3 | 結線ビス Screw | 鉄 Steel | SWCH・SPCC | M4×0.7×8ℓ | ニッケルメッキ Nickel-Plated | フリータンシビス Type① |
| 4 | 取付金具 Mounting plate | 黄銅 Brass | C2680R | 板厚 t 1.0 | ニッケルメッキ Nickel-Plated | |
| 5 | カバー Cover | ポリカーボネート Polycarbonate | UL | 板厚 t 0.8 | 透明 Transparence | オプション Optional |

| 極数/Poles | 1P | 2 | 3 | 4 | 5 | 6 | 7 | 8 | 9 | 10 | 11 | 12 | 13 | 14 | 15 | 16 | 17 | 18 | 19 | 20 | 21 | 22 |
|----------|------|------|------|------|------|------|------|------|-------|-------|-------|-------|-------|-------|-------|-------|-------|-------|-------|-------|-------|-------|
| A | 28.6 | 38.6 | 48.6 | 58.6 | 68.6 | 78.6 | 88.6 | 98.6 | 108.6 | 118.6 | 128.6 | 138.6 | 148.6 | 158.6 | 168.6 | 178.6 | 188.6 | 198.6 | 208.6 | 218.6 | 228.6 | 238.6 |
| B | 20.0 | 30.0 | 40.0 | 50.0 | 60.0 | 70.0 | 80.0 | 90.0 | 100.0 | 110.0 | 120.0 | 130.0 | 140.0 | 150.0 | 160.0 | 170.0 | 180.0 | 190.0 | 200.0 | 210.0 | 220.0 | 230.0 |
| C | 11.6 | 21.6 | 31.6 | 41.6 | 51.6 | 61.6 | 71.6 | 81.6 | 91.6 | 101.6 | 111.6 | 121.6 | 131.6 | 141.6 | 151.6 | 161.6 | 171.6 | 181.6 | 191.6 | 201.6 | 211.6 | 221.6 |

海外規格
認定品

貫通型